



URAL
OIL
ENGINEERING
PLANT

УЭНМ

+7 347 677-30-90


info@uz-nm.ru

OVERVIEW PRESENTATION

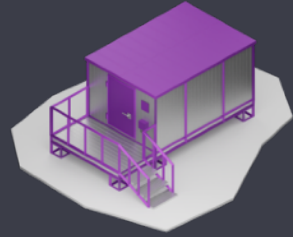
EQUIPMENT URAL OIL ENGINEERING PLANT



CONTENT

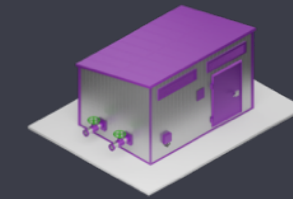
 Click "more"
to go the slide

+7 347 677-30-90
info@uz-nm.ru



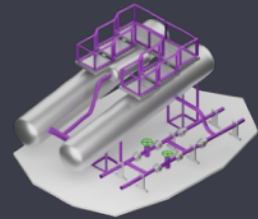
METERING UNITS

[MORE](#)



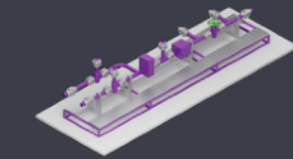
PUMPING STATIONS FOR VARIOUS MEDIUM

[MORE](#)



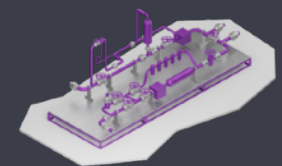
OIL, GAS AND WATER EARLY TREATMENT SYSTEMS

[MORE](#)



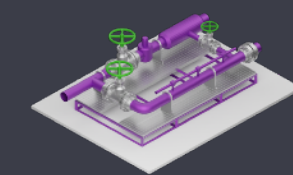
PIPELINE MANIFOLDS AND VALVE BLOCKS (GAS WELLS)

[MORE](#)



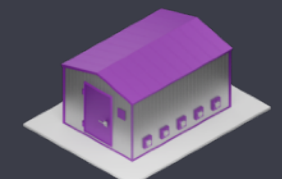
OIL/GAS/WATER CUSTODY TRANSFER (FISCAL METERING) UNITS

[MORE](#)



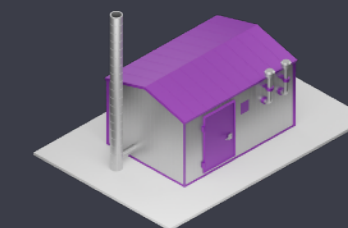
PIPELINE CLEANING AND DIAGNOSTIC DEVICES

[MORE](#)



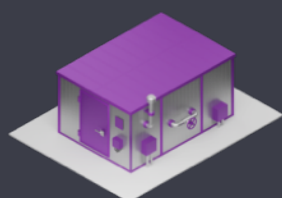
WATER INJECTION UNITS

[MORE](#)



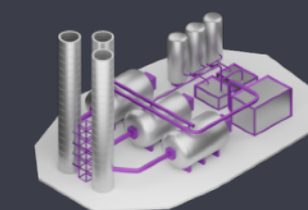
BOILER UNITS

[MORE](#)



DOSING UNITS

[MORE](#)



ENGINEERING

[MORE](#)

METERING UNITS

Automated group metering units are used for measure fractional composition and flow of oil wells.



PRODUCTION OF AGMM

Units include the technological equipment modules and life support system elements. The technical block includes measuring and distribution modules.

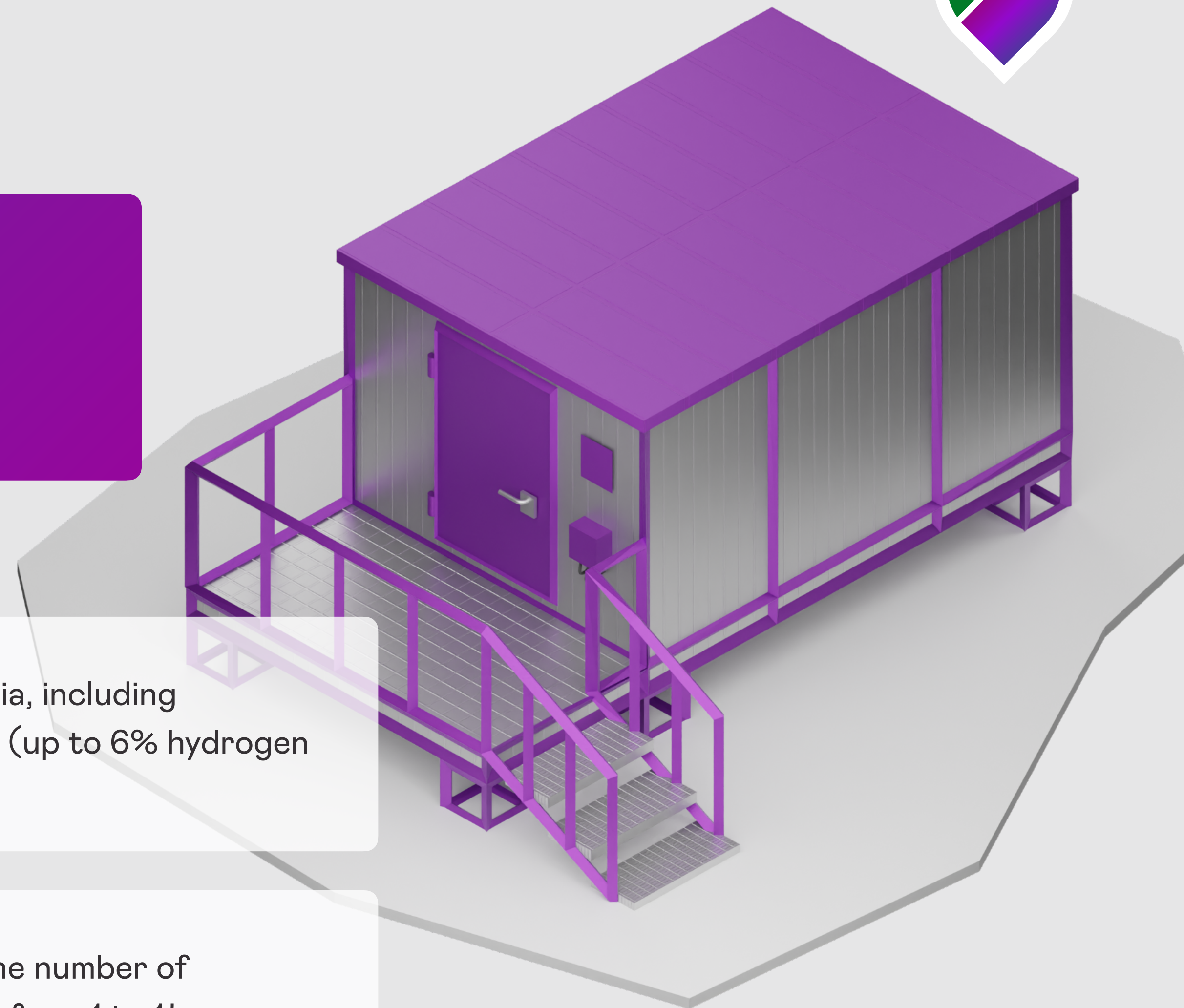
IMPLEMENTATION OPTIONS:

Depending on the range of rated flow values connected to the well installation, ton/day: 400,1500,2000,3000,4000;

Depending on the flow of liquid and gas factor from 150 nm³ /t;

For various media, including aggressive ones (up to 6% hydrogen sulfide);

Depending on the number of connected wells from 1 to 14.



+7 347 677-30-90

info@uz-nm.ru

OIL, GAS, WATER EARLY TREATMENT SYSTEMS



ADVANTAGES

The main goal of the development of such systems was its usage in oilfields with the lack of functioning infrastructure

PERFORMS THE FOLLOWING MAIN FUNCTIONS:

Separation of associated gas from oil and gas mixture that comes from the well

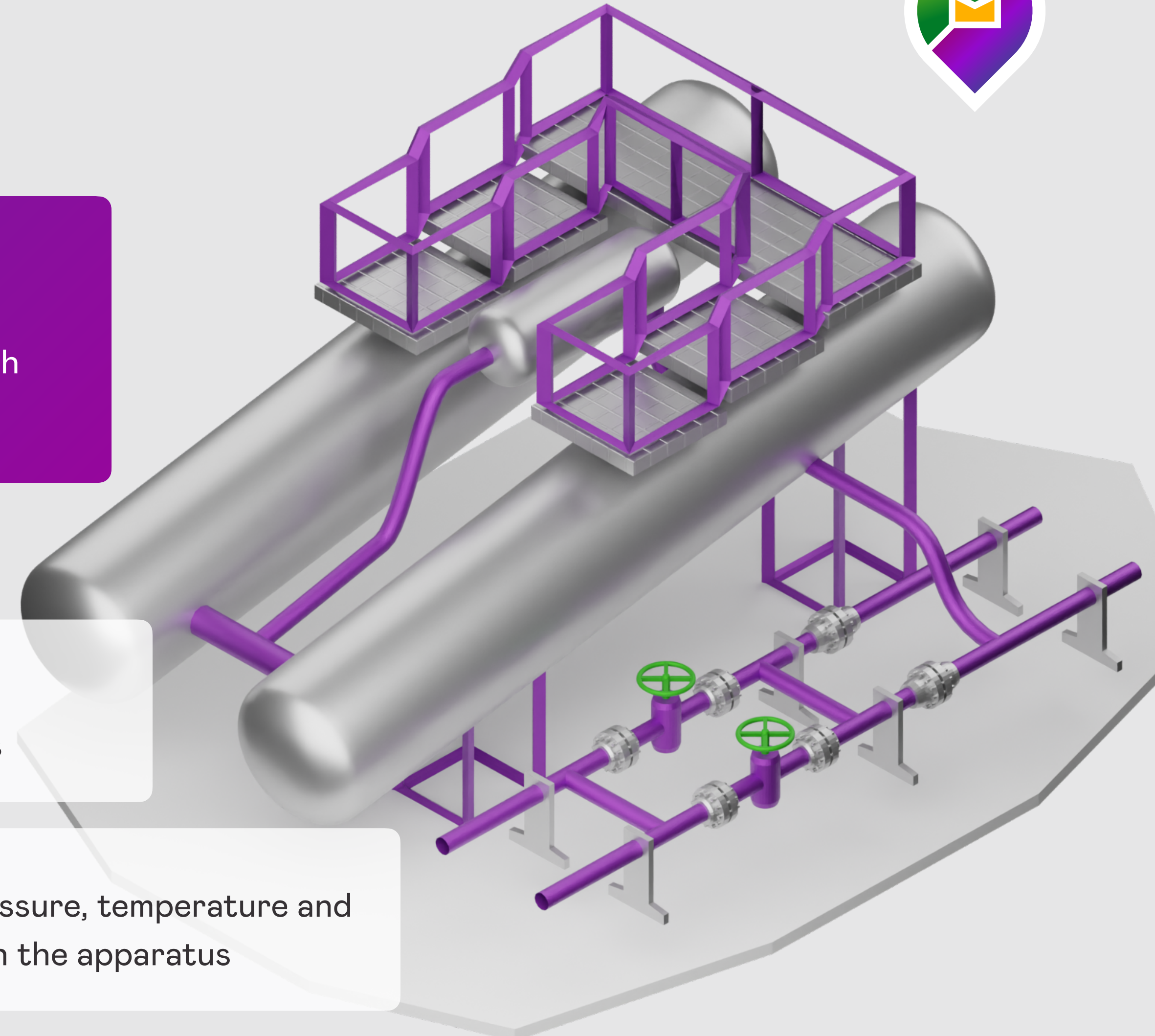
Accounting of associated gas

Regulation of flow and pressure of associated gas by a regulator at the outlet of the inlet separator

Control of pressure, temperature and level of liquid in the apparatus

Transmission of information to existing APCS

Accounting for oil pumping from storage tanks



+7 347 677-30-90

info@uz-nm.ru

OIL/GAS/WATER CUSTODY TRANSFER (FISCAL METERING UNITS)



Designed to automatically measure mass (volume) and oil/gas/water quality (density, viscosity, moisture content, pressure, temperature)

CONSISTS OF THE FOLLOWING ELEMENTS:

Oil Quality Measurement Unit (QMU)

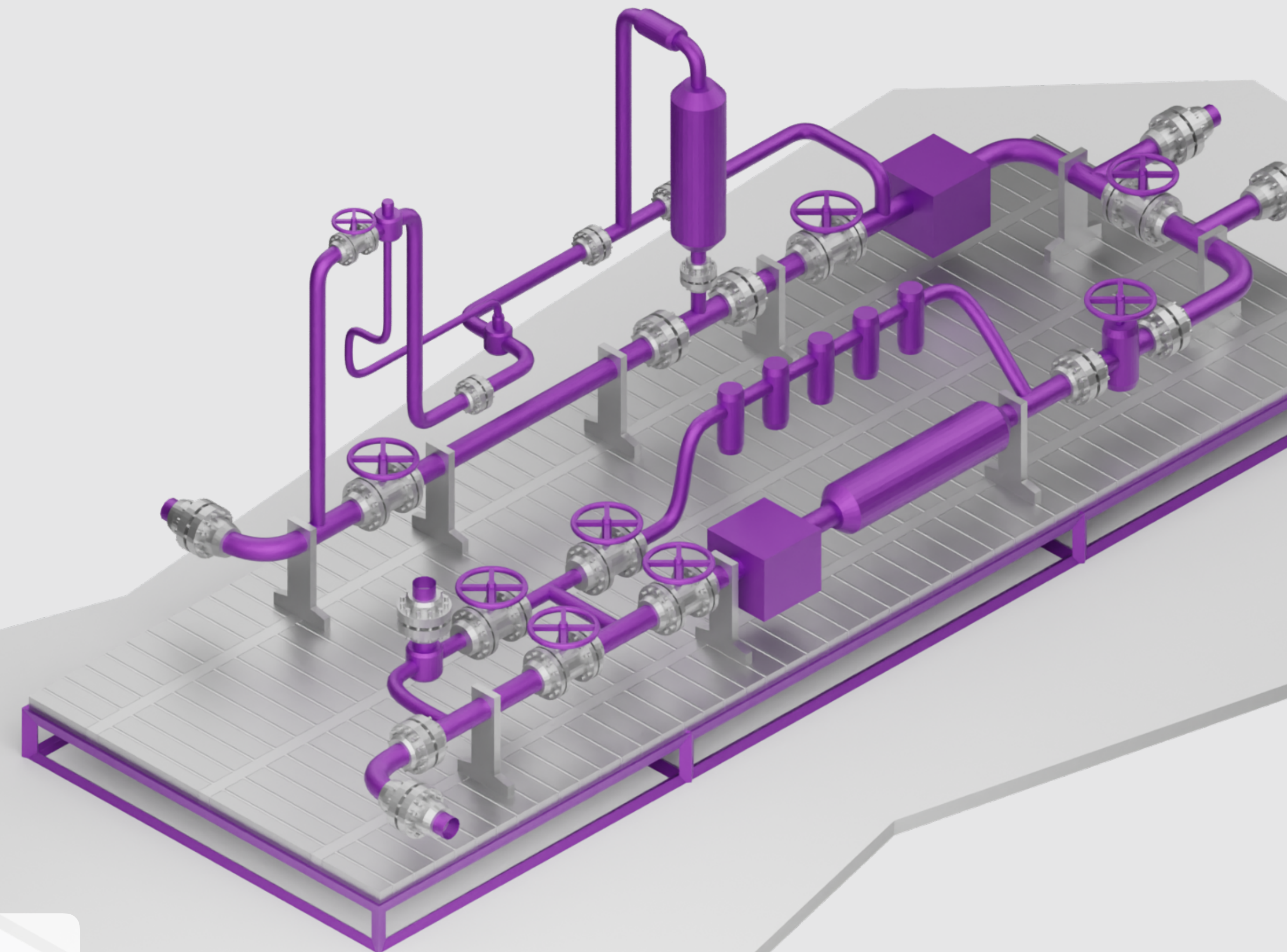
Information processing system (IPS)

Flow control node (FCN)

Calibration rig unit (CRU)

Filters unit (FU)

Lines measuring unit (LMU)



+7 347 677-30-90

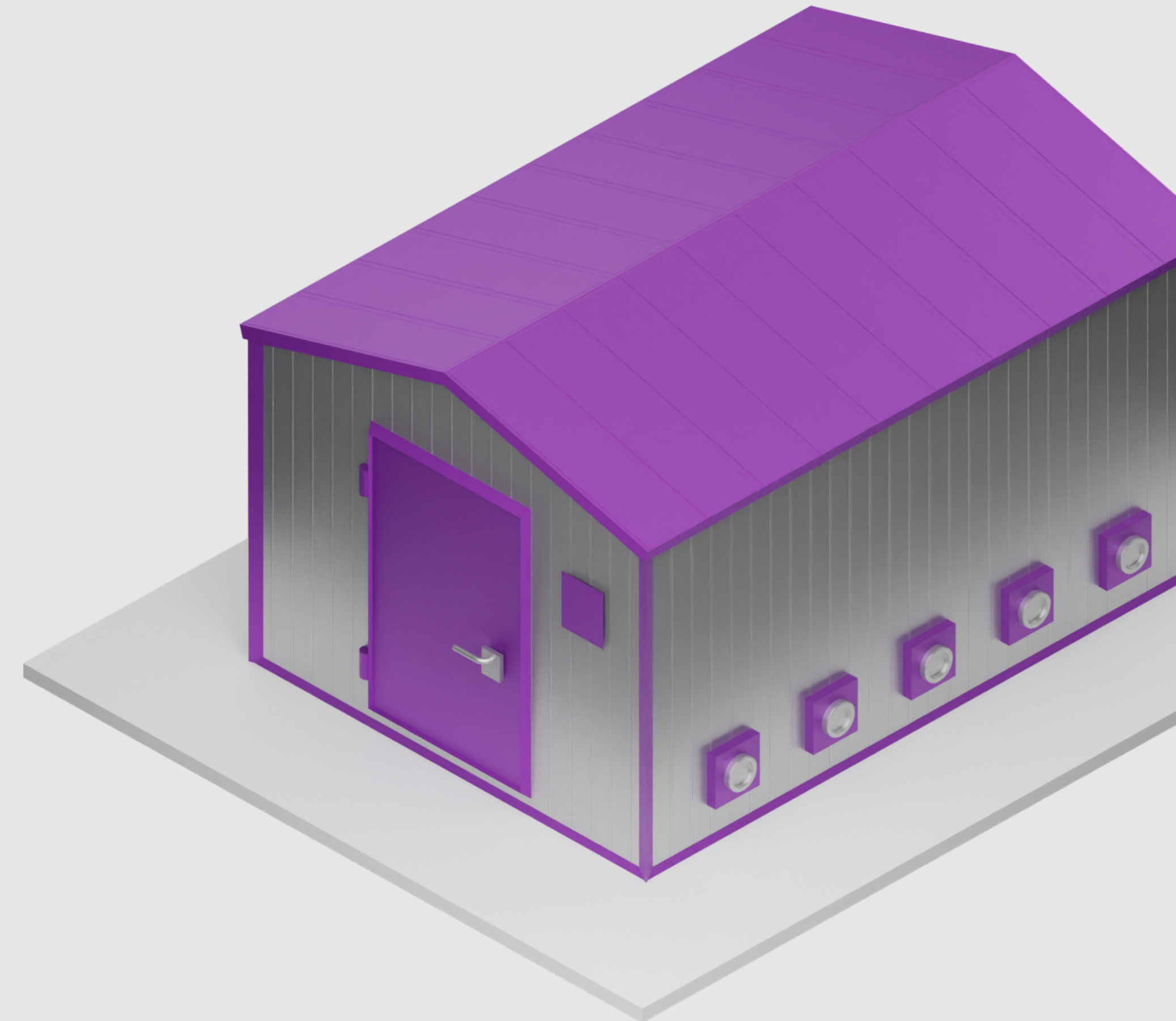
info@uz-nm.ru

WATER INJECTION UNITS

Water injection units are designed to distribute injected fluid into injection wells of maintaining formation pressure systems in oil producing companies

TECHNICAL CHARACTERISTICS:

Feature	Value
Maximum injection pressure, max, MPa	25
Maximum water flow per well, m. cub./day	According to the requirements
Pressure head collector diameter, mm	According to the requirements
Pressure head pipeline diameter, mm	According to the requirements
Number of injection pipes, pcs	Up to 10
Water injection meter	Vortex, ultrasonic flow meters
Power consumption, kW	Up to 15 kW
Explosion protection	Explosion-proof / general industrial
Remote control of water flow	With intelligent control valves
Corrosion protection	Internal coating / corrosion-resistant steel



+7 347 677-30-90

info@uz-nm.ru

DOSING UNITS

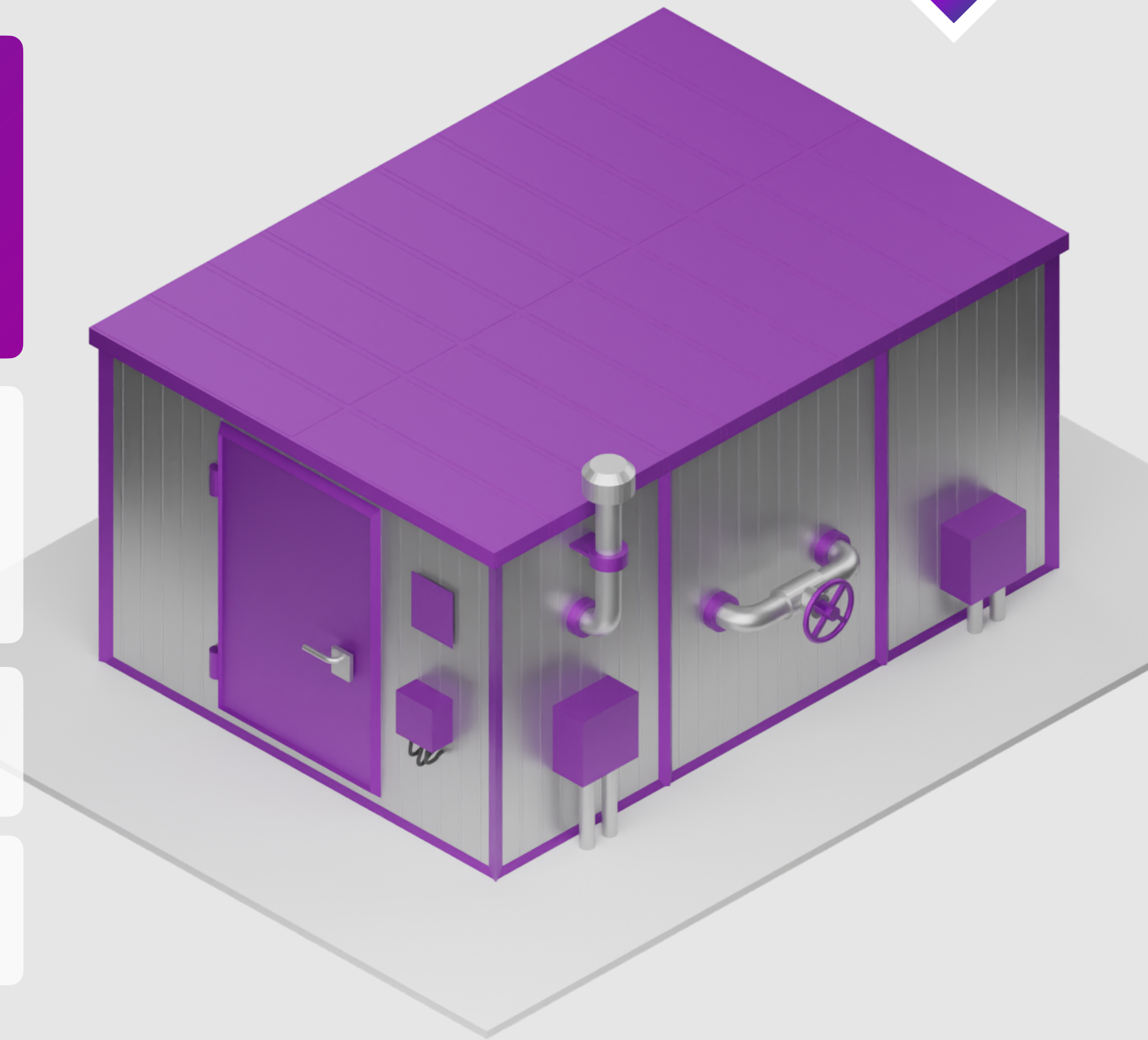


Designed for dosing injection of liquid reagents into pipelines of transport and oil preparation system, for oil and gas processing plants, into the opening of production and injection wells with the aim of protecting pipelines and equipment from corrosion, hydrate, deposition of salts, carbonate deposits, paraffinoids, etc.

The field of application of these units is oil well in-plant production pressure systems, group metering units, oil, gas and water treatment units and automated oil production process control systems.

Can be produced fully explosion-proof and in separate versions.

The number of dosing points is limited only by the dimensions of the unit



+7 347 677-30-90

info@uz-nm.ru

PUMPING STATIONS

Pumping stations are manufactured in different design and configuration depending on the purpose and requirements of the customer



The pumping station is housed with individual modules that connect together at the site of operation in a single building.

The units are equipped with lifting equipment, heating and ventilation system, gas detection and alarm system.

EXAMPLES OF STATIONS BY DESTINATION:

WIPS – water injection pumping station

PS – oil pumping station

FPS – fire-extinguishing (foam) pumping station

MPS – the multiphase pumping station



+7 347 677-30-90

info@uz-nm.ru

PIPELINE MANIFOLDS AND VALVE BLOCKS (GAS WELLS)



Designed for single or multiple gas wells

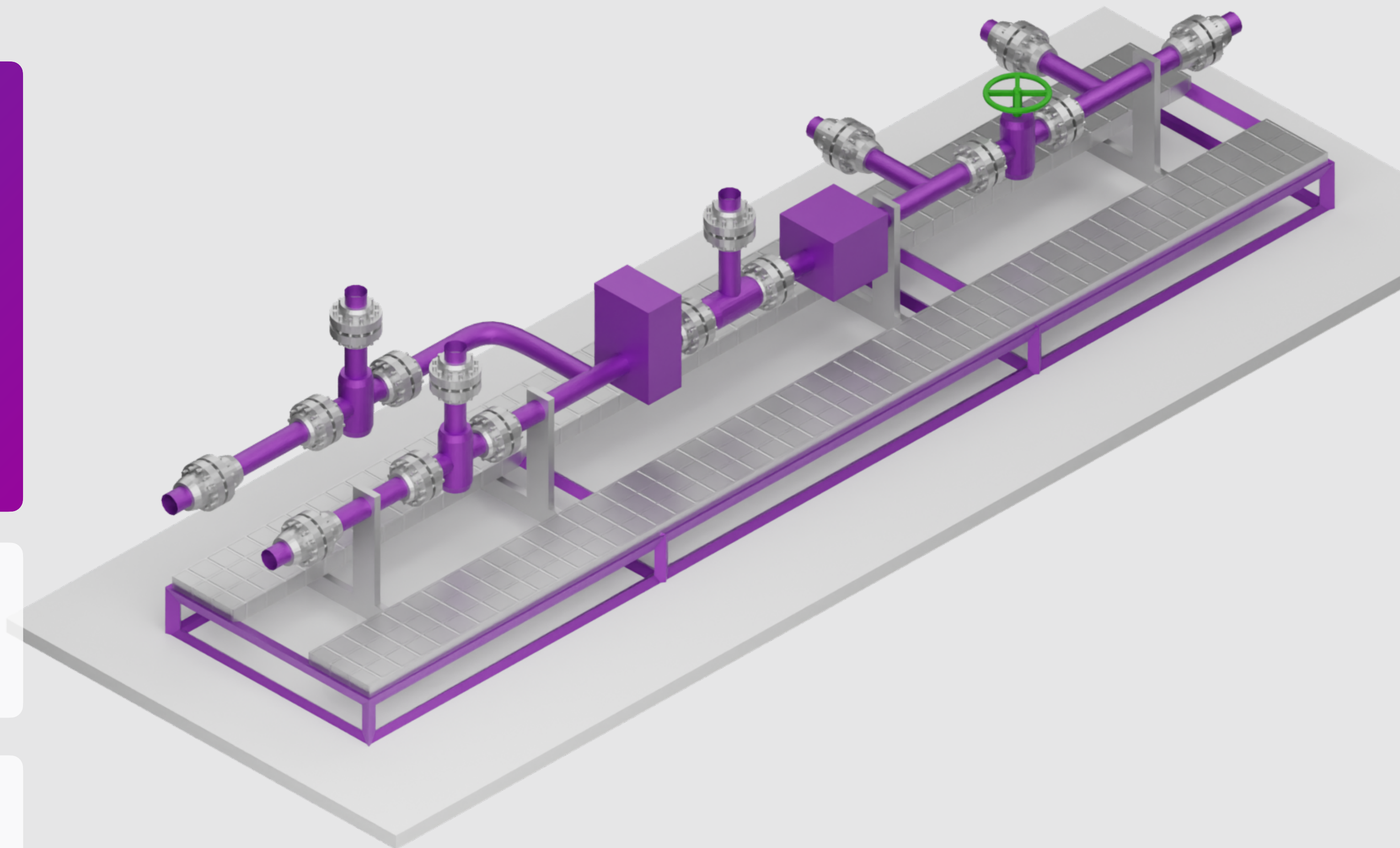
Manifolds have the functions of pressure reduction and measuring the output of the extracted gas

It is possible to register and account for solid fractions and drip moisture

Installations are made on an open base in transport dimensions

Possible version with gas reversers for injection into formation and/or underground gas deposits

Single unit may include a methanol injection unit to prevent hydrates



+7 347 677-30-90

info@uz-nm.ru

PIPELINE CLEANING AND DIAGNOSTIC DEVICES



Devices are designed for starting and receiving means of cleaning and diagnostics of the field pipeline system

It is possible to manufacture with or without a locking tie.

Diameter of conditional passage: up to 1 500 mm.

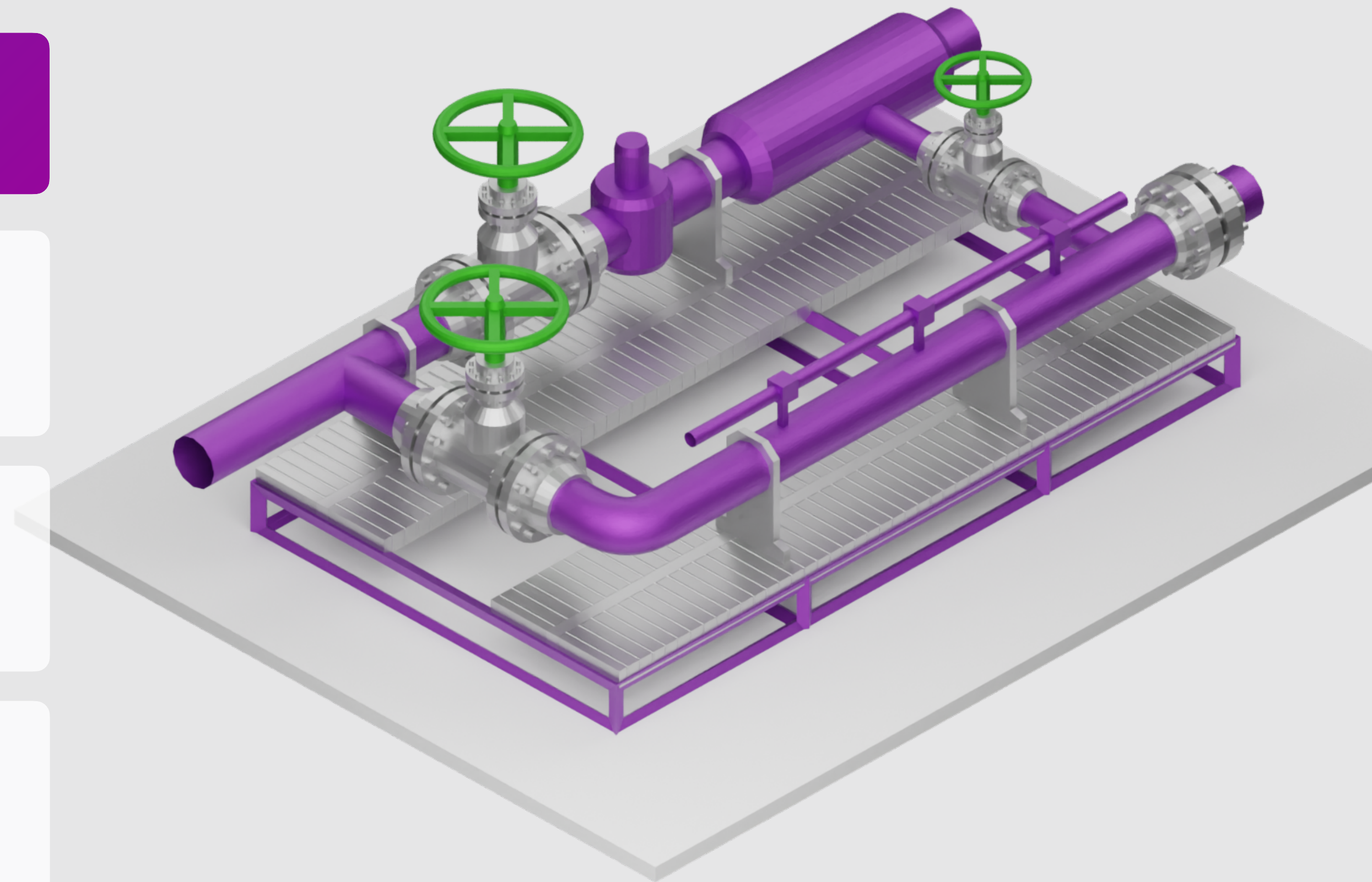
Working pressure: up to 10,0 MPa.

Corrosion-resistant version: H₂S up to 6%.

Climatic version: moderate and cold climate, cold climate (outdoors).

Manufacturing options according to the type of closure: Clamp / bayonet.

Production version: Block and on open platform/frame.



+7 347 677-30-90

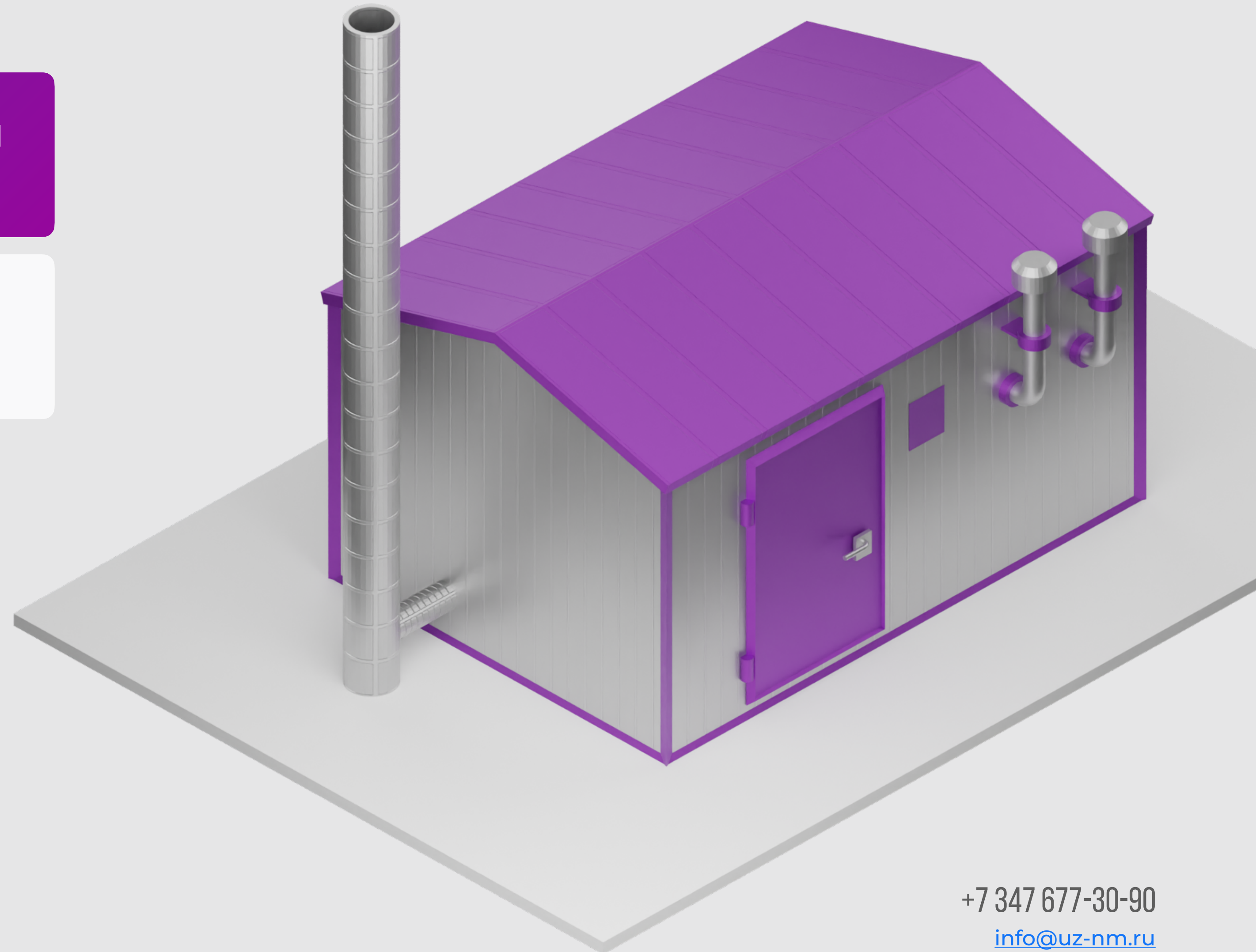
info@uz-nm.ru

BOILER UNITS

Unit design up to 70 MW, single unit power up to 18 MW.
Chassis version for emergency situations

Operation on all types of liquid and gaseous fuels, including fuel with elevated content of hydrogen sulfide

Fully automatic operation with option of remote control of the plant



+7 347 677-30-90

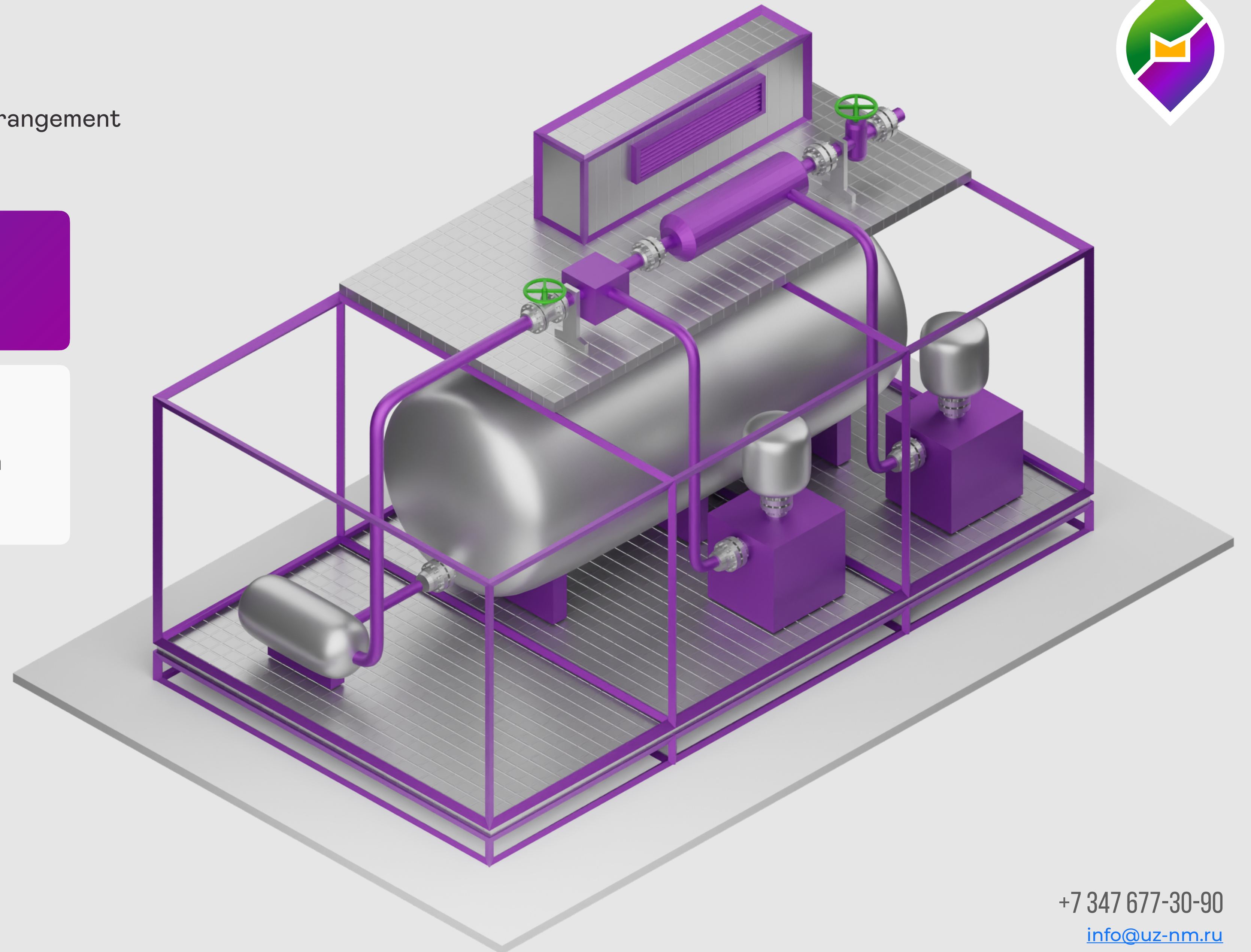
info@uz-nm.ru

ENGINEERING

Development of a complex solution for the arrangement of offshore and land infrastructure facilities

Building information modeling of mining, transportation and processing facilities

Development of standard solutions and working design documentation for certain requirements



+7 347 677-30-90

info@uz-nm.ru